

FIRST FLOOR
PHASE IV:

LIBRARY/ELETRONIC MEDIA CENTER

This project will be part of the on-going work based on availability of funds. Anticipated construction would be accomplished over the summer of 2005. The concept is to have both hard copy (books) as well as internet connectivity to University data bases et. al.

This space would be equipped with state-of-the art IT equipment and "a lending library" of electronic information, CD, DVD, etc.

PHASE V: UPGRADE OF FOOD SERVICE FACILITY

The current food service is a catered operation. The requirements are different the food preparation facility. Upon final review of what type of food service the Brothers see appropriate to meet their needs the equipment can be modified full-preparation verses full catering or some hybrid facility.

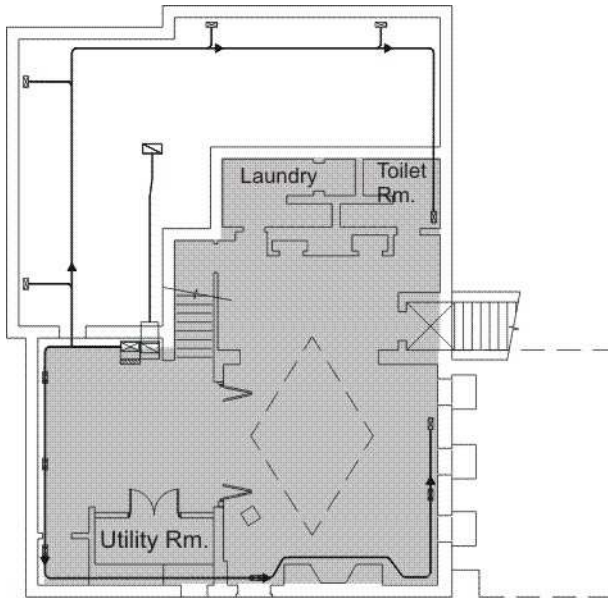
PHASE VI: THE TERRACE ROOM

This area will provide additional space for Brother and friends to gather. It will be a flexible space with multiple uses, including the billiards table. The construction of this enclosed area will help to mitigate the current moisture condition.

GENERAL PROJECT NOTES:

Security and Life Safety Systems. All window openings and doors on the 1st floor and Basement level will be alarmed. The system will be monitored by an off-site security provider, 24/7.

- The "adaptive use" of the space proposed in Phase III, IV, V, VI, will provide the Brothers with more useable space for separate gathering type functions.
- A vertical utility closet will be located on the 1st, 2nd and 3rd floors to provide a vertical pathway for a service utilities including electrical. HVAC, refrigeration lines, voice and data cabling and life safety system.
- A redo of the bathroom on the 2nd floor can also be planned for the summer of 2005.



PLAN OF BASEMENT

BASEMENT LEVEL
PHASE III:

THE CLUB ROOM/CHAPTER ROOM

The space in the basement has always been under utilized. The proposed use of this space will include:

- The Club Room with wide screen TV and sound system, sports nights, etc.
- The Chapter Room
- A Laundry Facility
- A Unisex toilet Facility
- A Hospitality area
- A secured personal storage area

The space will be air conditioned with a humidity control system. Special emphasis will be place on adequate water proofing system for the exterior walls.

Space will be provided with new electrical, lighting, life safety and sprinkler systems.

We will infill the depression in the floor and pour a concrete slab to level this area with the existing floor. Using perhaps black granite tiles creating the diamond and the star. The remaining floor around the diamond would be a lighter gray granite tile.